


Photocontrol - NIGHTFOX Standard Grade Locking Type Electronic Photocontrol, 120-277 V, Mexico Sales Only

Item ELC4536MX



PRODUCT DESCRIPTION

LED-compatible photocontrol features a 10-year life expectancy. Ideal for single fixture control of smaller LED fixtures that require a cost-effective solution.

FEATURES

- ▶ Non-drift silicon light sensor with IR filter
- ▶ All components meet 10-year life expectancy
- ▶ Exceeds 5,000 ON/OFF switching cycles
- ▶ Ideal for single HID and LED fixtures (up to 550 W @ 277 VAC)
- ▶ Power-up ON delay (45-60 sec) for easy installation verification and troubleshooting
- ▶ 510 J MOV surge protection

APPLICATIONS

- ▶ Outdoor Lighting Control

TECHNICAL DATA

General	
Model Number	ELC4536MX
Description	NIGHTFOX Standard Grade Locking Type Electronic Photocontrol, 120-277 V, Mexico Sales Only
UPC Code	078275142961
Brand	Intermatic
Country of Origin (Intermatic)	MEXICO
Warranty Period	6-Year limited
Control Specifications	
Sensor Time Delay	Instant ON; 2 sec to 5 sec OFF
Photocell Type	Silicon Diode
Photo Control Switch Type	Relay
Fail Mode	ON
Activation On	1.5 fc
Activation Off	2.25 fc
Photocontrol Type	Electronic
Application Compatibilities	LED; Incandescent; HID
Photocontrol Style	Locking type
Photocontrol Sensor Location	Side
Dimensions	
Product Height (in)	2.75
Product Height (mm)	69.9
Product Diameter (in)	3.375
Product Diameter (mm)	85.8
Material Specifications	
Cover Color	Blue

Housing Material	Polycarbonate with Acrylic Window
------------------	-----------------------------------

Load Ratings

Magnetic Ballast Range(s)	1800 VA
Tungsten Range(s)	1000 W
Electronic Ballast Load Ratings Ranges	2 A, 120-277 VAC, 50/60 Hz

Electrical Specifications

Input Voltage Range(s)	120-277 VAC, 50/60 Hz
Surge Protection Technology	510 J MOV

Packaging

Shipping Weight (lbs)	0.27
Unit Carton Dimensions (H x W x D) in	3.25 x 3.25 x 3.25 in

Operating Specifications

Expected Lifetime (Years)	10
Expected Lifetime (Operations)	5000

Environmental Specifications

Temperature (operation)	-40°C..70°C
Usage Environments	Outdoor

Standards and Certifications

Other Certifications and Compatibilities	NOM
California Proposition 65	None
RoHS Certification	X

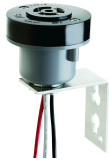
ACCESSORIES



K121
Locking Type Receptacle, 3-Pin, C136.10
Compliant, 9" lead



K121-30
Locking Type Receptacle, 3-Pin, C136.10
Compliant, 30" lead



K122
Locking Type Receptacle, 3-Pin, C136.10
Compliant, with Pole Mounting Bracket



KPT1170-010
PowerTap Receptacle, 7-Pin, C136.41
Compliant, Dusk-to-Dawn, 10' cable



KPT0170-010
PowerTap Receptacle, 7-Pin, C136.41
Compliant, Always-On, 10' cable



K171H
Locking Type Receptacle, 7-Pin, C136.41
Compliant, 12" lead



SK4500K
Shorting Plug for Locking Type Receptacles



KPT0170-015
PowerTap Receptacle, 7-Pin, C136.41
Compliant, Always-On, 15' cable



SK4500KMX
Shorting Plug for Locking Type Receptacles